



an Andersen Company

2045 Kerper Blvd., Dubuque, IA 52004-1072
PH. 563.556.2270

SERIES T-7
CLAD TALON DOUBLE HUNG FIXED TRANSOM
FIXED TRANSOM
"NON-IMPACT"

GENERAL NOTES



1. This product has been evaluated and is in compliance with the 2007 Florida Building Code (FBC) structural requirements excluding the "High Velocity Hurricane Zone" (HVHZ).
2. Product anchors shall be as listed and spaced as shown on details. Anchor embedment to base material shall be beyond wall dressing or stucco.
3. When used in areas requiring wind borne debris protection this product is required to be protected with an impact resistant covering that complies with Section 1609.1.2 of the FBC.
4. For 2x stud construction, the length of the anchors shall be increased an amount equal to the thickness of any sheathing or wall coverings such that penetration of the anchor into the stud shall be no less than that shown in the masonry 2x buck installation herein.
5. Site conditions that deviate from the details of this drawing require further engineering analysis by a licensed engineer or registered architect.

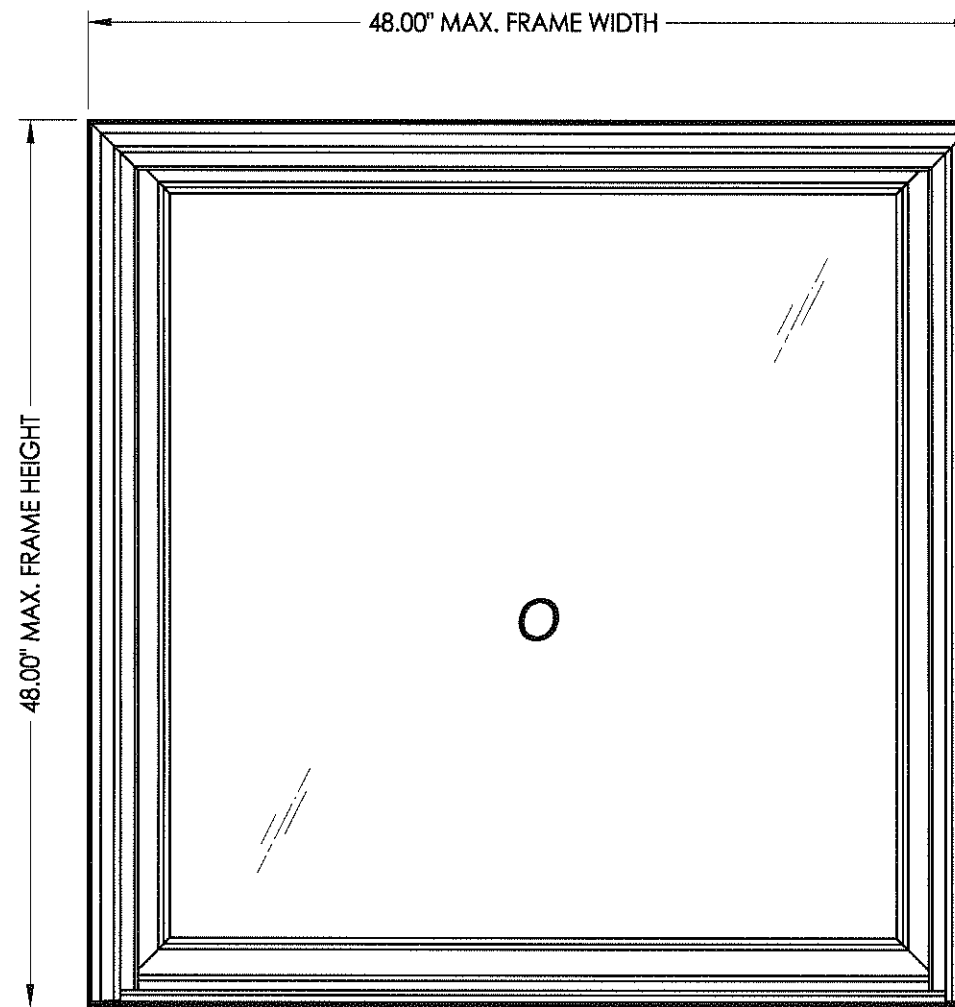


TABLE OF CONTENTS	
SHEET #	DESCRIPTION
1	Typical elevations, design pressures & general notes
2	Horizontal & vertical cross sections
3	Buck and frame anchoring
4	Components
5	Bill of materials & glazing details

OVERALL FRAME DIMENSION	OVERALL D.L.O. DIMENSION	GLASS TYPE	DESIGN PRESSURE (PSF)	
			POS.	NEG.
48.00" X 48.00"	40.93" X 41.81"	G1	+50.0	-50.0

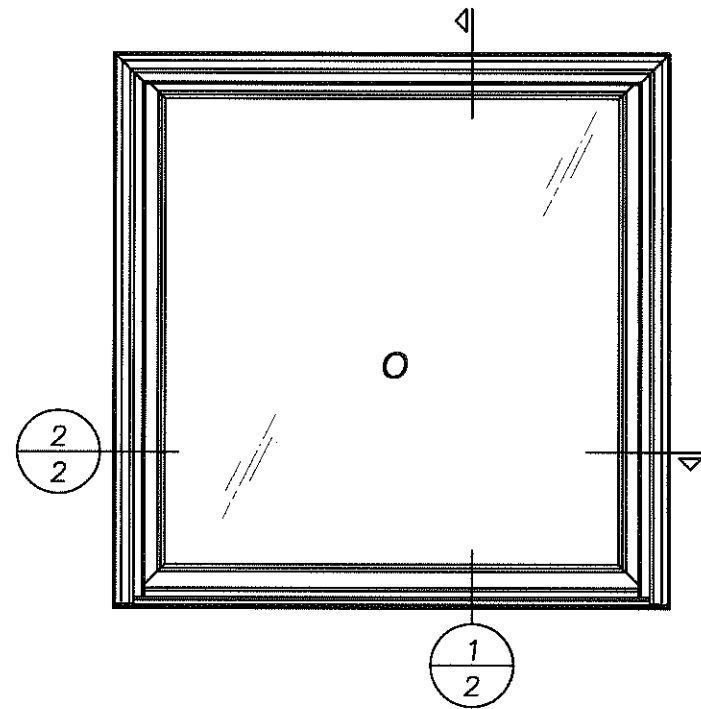
Documents Prepared By:

RW BUILDING CONSULTANTS, INC.
P.O. Box 230 Vairico FL 33595
Phone No.: 813.659.9197
Florida Board of Professional Engineers
Certificate Of Authorization No. 9813
Wendell W. Haney 9508
Wendell W. Haney, P.E. No. 54158

PRODUCT: DOUBLE HUNG TRANSOM
PART OR ASSEMBLY: TYPICAL ELEVATION, DESIGN PRESSURES & GENERAL NOTES

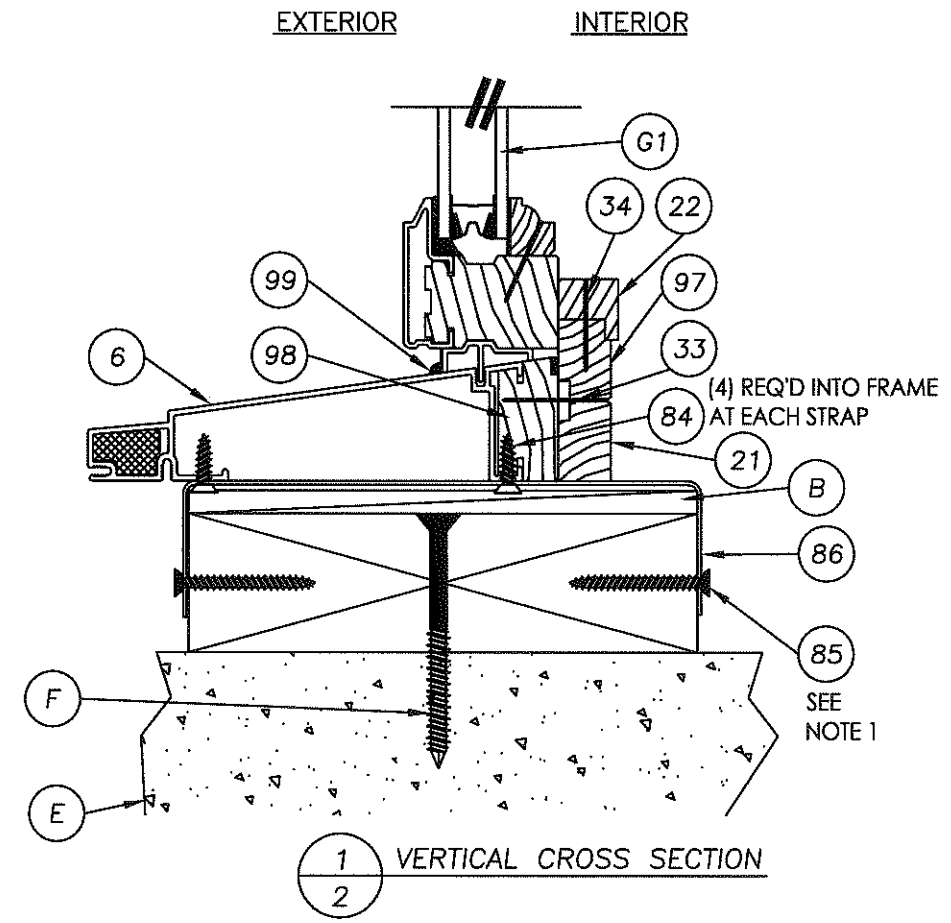
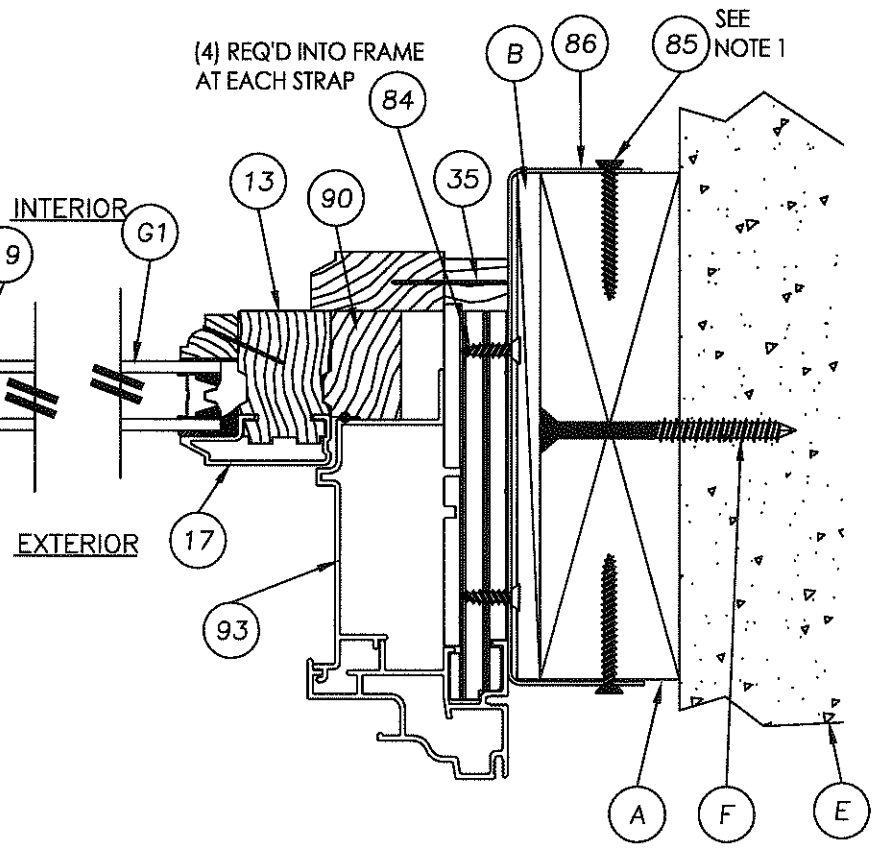
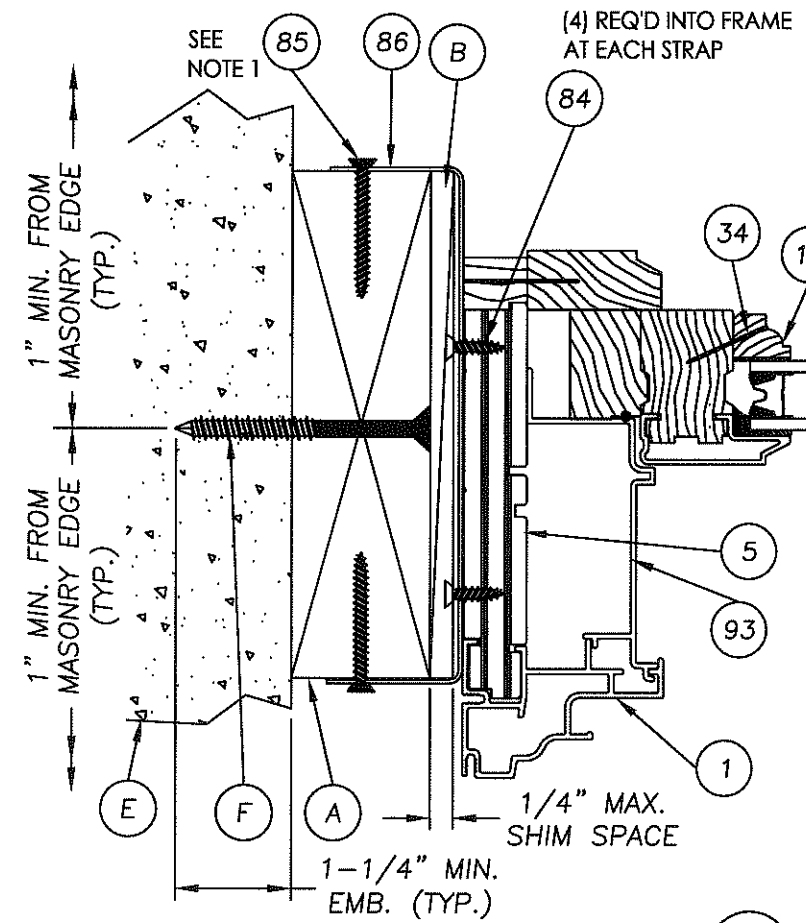
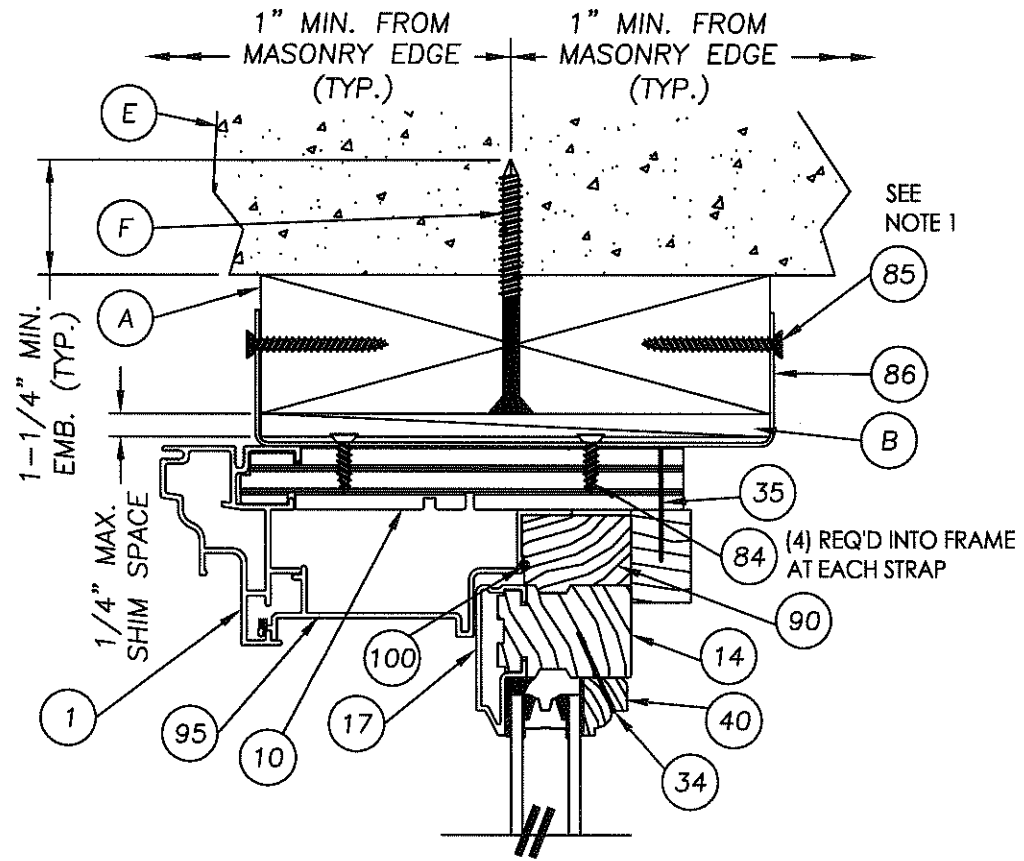
NO.	DATE	REVISIONS		
		JK	WH	BY
2	5/20/08	Revise to 2007 FBC		
1	12/21/07	ADD GRADE OF WOOD		

DATE: 05/22/08
SCALE: N.T.S.
DWG. BY: JK
CHK. BY: WWH
DRAWING NO.: FL-9669.6
SHEET 1 OF 5



NOTES:

1. For 2x stud construction, the length of the anchors shall be increased an amount equal to the thickness of any sheathing or wall coverings such that penetration of the anchor into the stud shall be no less than that shown in the masonry 2x buck installation herein.
2. 1" BRAD NAIL 6" TO 8" ON CENTER.



2 HORIZONTAL CROSS SECTION

1 VERTICAL CROSS SECTION

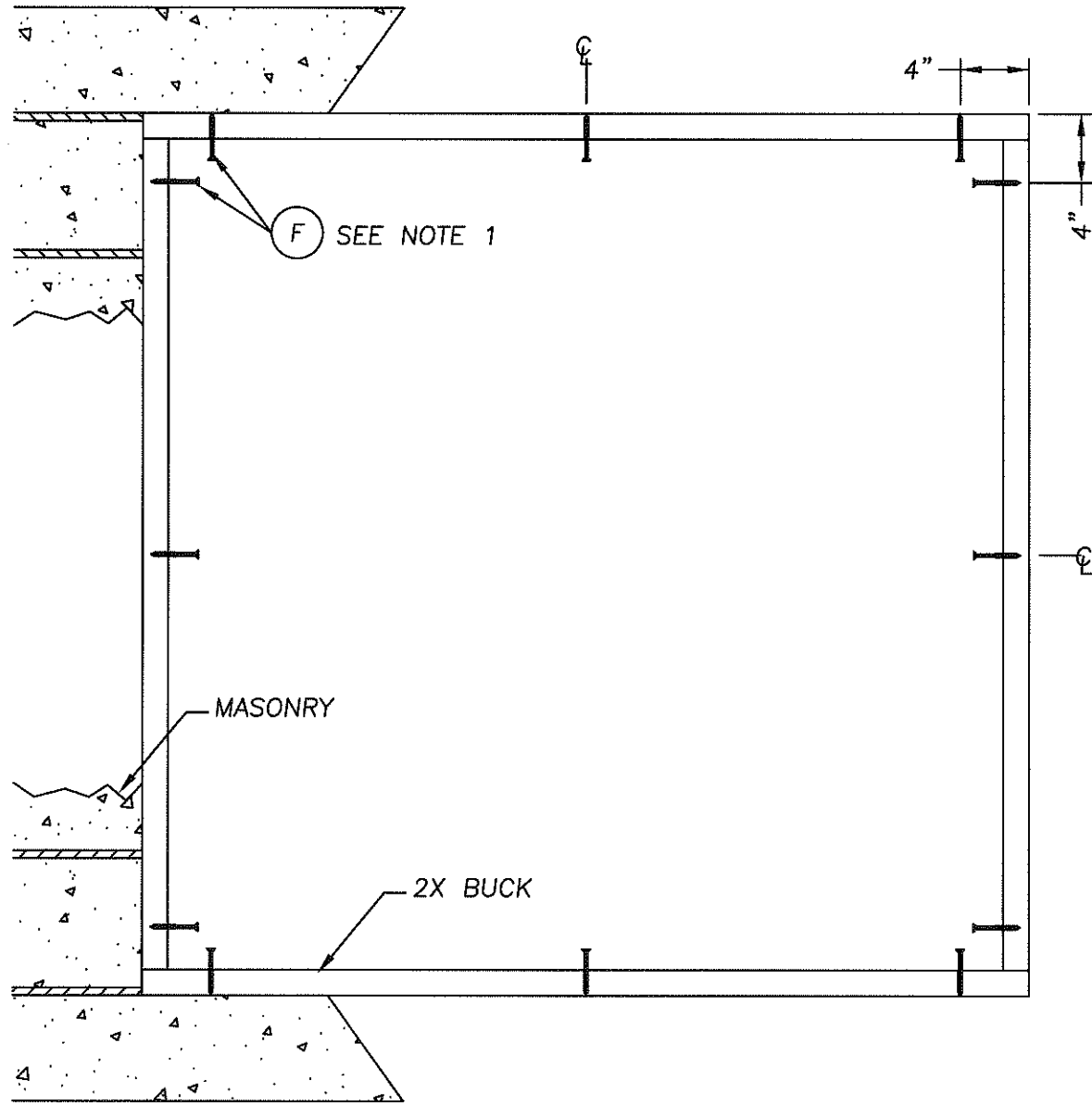
Documents Prepared By:

RW BUILDING CONSULTANTS, INC.
 P.O. Box 230 Valrico FL 33595
 Phone No.: 813.659.9197
 Florida Board of Professional Engineers
 Certificate Of Authorization No. 9813
Wendell W. Haney 9-5-08
 Wendell W. Haney, P.E. No. 54158

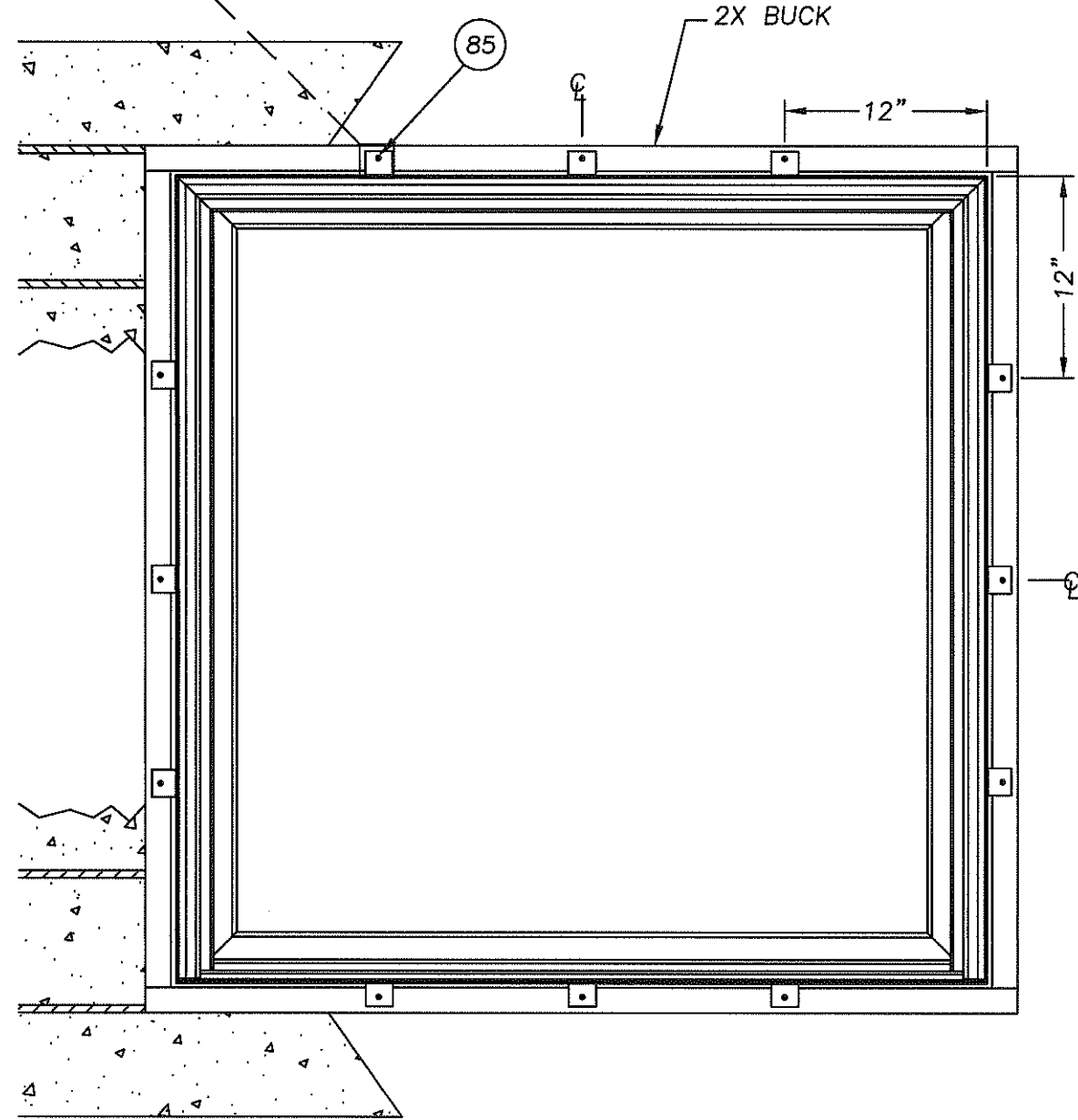
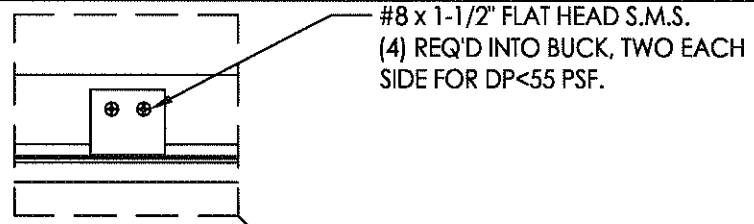
PRODUCT: DOUBLE HUNG TRANSOM
 PART OR ASSEMBLY: VERTICAL & HORIZONTAL CROSS SECTIONS

NO.	DATE	REVISIONS	BY
2	5/20/08	Revise to 2007 FBC	JK
1	12/21/07	ADD GRADE OF WOOD	WH

DATE: 05/22/08
 SCALE: N.T.S.
 DWG. BY: JK
 CHK. BY: WWH
 DRAWING NO.: FL-9669.6
 SHEET 2 OF 5



BUCK ANCHORING



FRAME ANCHORING

NOTES:

1. 1/4" Elco Concrete screws anchoring 2x buck require a minimum 1" clearance to masonry edges, a 1-1/4" minimum embedment and a minimum 4" clearance to adjacent concrete screws. Substitution of equal concrete screws from a different supplier may have different edge distance and center distance requirements. Concrete screw locations at the corners may be adjusted to maintain the minimum edge distance to mortar joints. If Concrete screw locations noted as "MAX. ON CENTER" must be adjusted to maintain the minimum edge distance to mortar joints, additional Concrete screws may be required to ensure the maximum on center dimension is not exceeded.

Documents Prepared By:

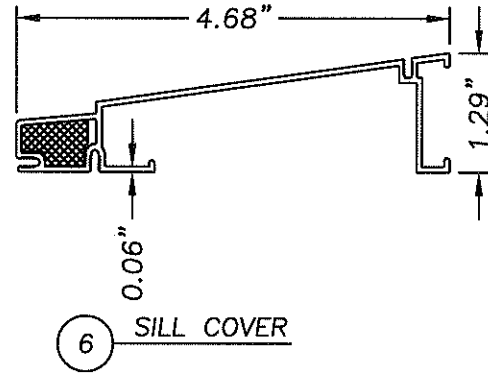
RW BUILDING CONSULTANTS, INC.
 P.O. Box 230 Valrico FL 33595
 Phone No.: 813.659.9197
 Florida Board of Professional Engineers
 Certificate Of Authorization No. 9813
Wendell W. Haney 9-5-08
 Wendell W. Haney, P.E. No. 54158

PRODUCT:
 DOUBLE HUNG
 TRANSOM

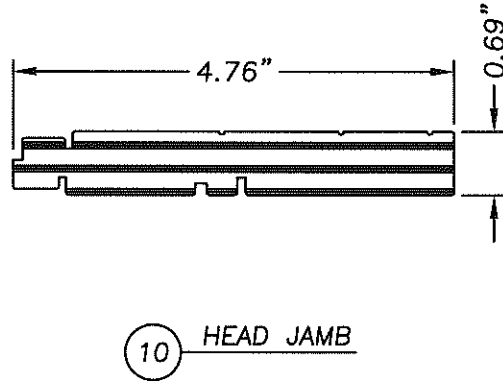
PART OR ASSEMBLY:
 BUCK & FRAME
 ANCHORING

NO.	DATE	REVISIONS	BY
2	5/20/08	Revise to 2007 FBC	JK
1	12/21/07	ADD GRADE OF WOOD	WH

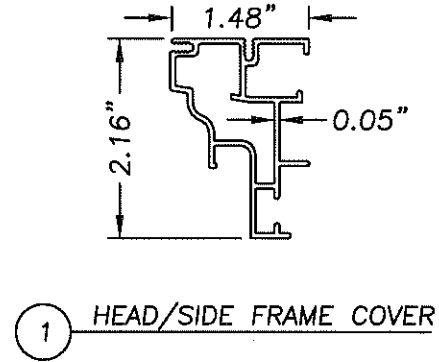
DATE: 05/22/08
 SCALE: N.T.S.
 DWG. BY: JK
 CHK. BY: WWH
 DRAWING NO.:
 FL-9669.6
 SHEET 3 OF 5



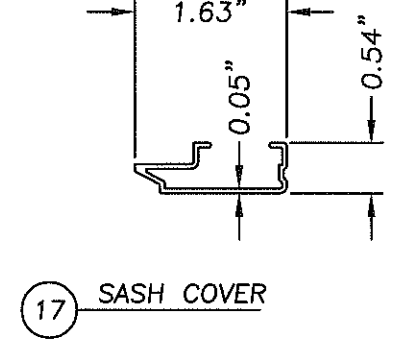
6 SILL COVER



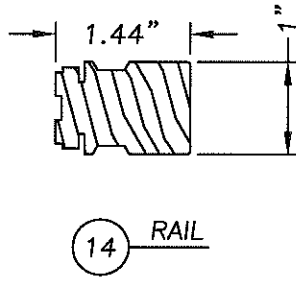
10 HEAD JAMB



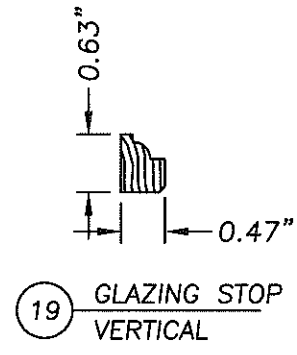
1 HEAD/SIDE FRAME COVER



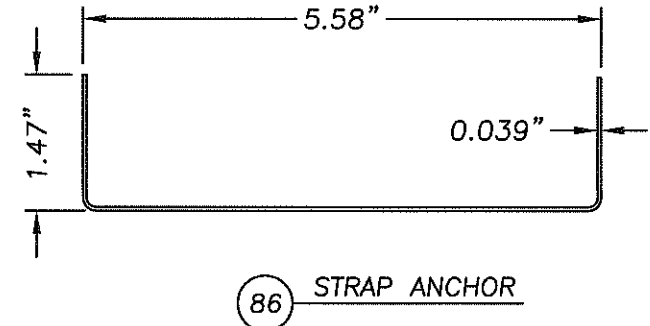
17 SASH COVER



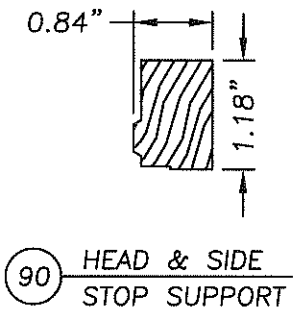
14 RAIL



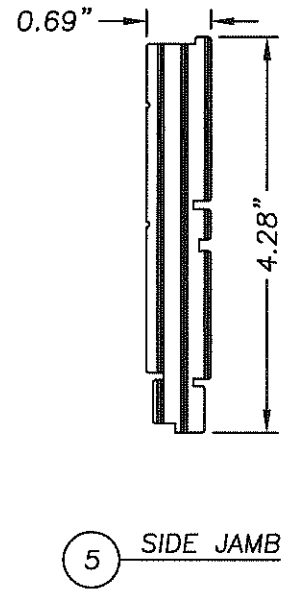
19 GLAZING STOP VERTICAL



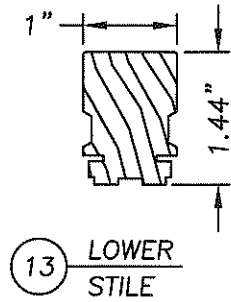
86 STRAP ANCHOR



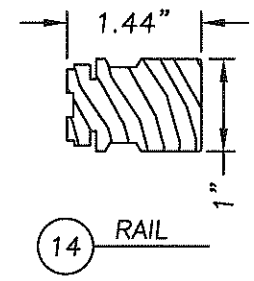
90 HEAD & SIDE STOP SUPPORT



5 SIDE JAMB



13 LOWER STILE



14 RAIL

Documents Prepared By:
RW BUILDING CONSULTANTS, INC.
 P.O. Box 230 Valrico FL 33595
 Phone No.: 813.659.9197
 Florida Board of Professional Engineers
 Certificate Of Authorization No. 9813
Wendell W. Haney 9-5-08
 Wendell W. Haney, P.E. No. 54158

PRODUCT: DOUBLE HUNG TRANSOM
 PART OR ASSEMBLY: COMPONENTS

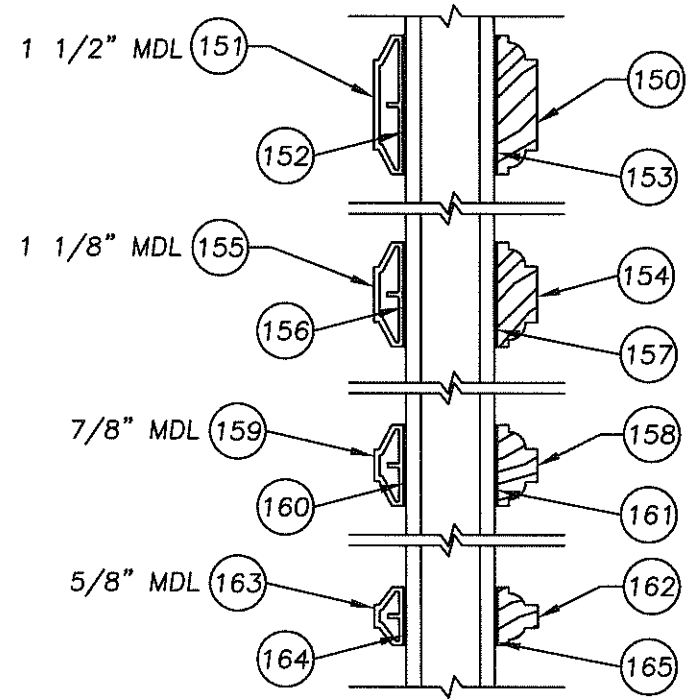
NO.	DATE	BY
2	5/20/08	JK
1	12/21/07	WH

REVISIONS

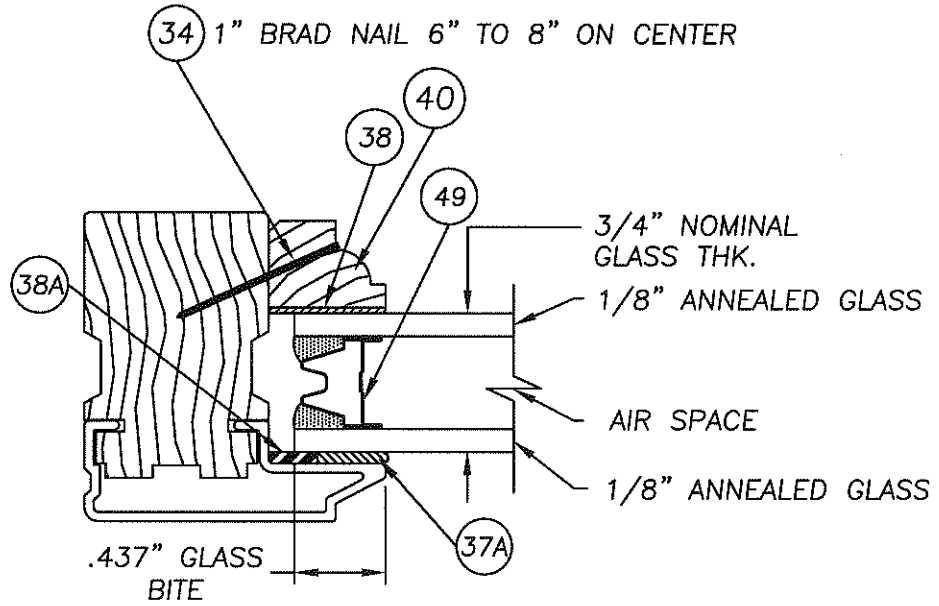
DATE: 05/22/08
 SCALE: N.T.S.
 DWG. BY: JK
 CHK. BY: WWH
 DRAWING NO.: FL-9669.6
 SHEET 4 OF 5

R:\A - Projects\Project Folders\Proj 1201-1300\pf 1294\PF 1294A\DWG\FL-9669.6-REV 2.dwg, FL-9669.6-5

BILL OF MATERIALS		
ITEM	DESCRIPTION	MATERIAL
A	2X BUCK SG ≥ .55	WOOD
B	1/4" MAX. SHIM SPACE	WOOD
E	MASONRY - 3,192 PSI MIN. CONCRETE CONFORMING TO ACI 301 OR HOLLOW BLOCK CONFORMING TO ASTM C90	CONCRETE
F	1/4" x 2-3/4" ELCO TAPCON	STEEL
1	HEAD / SIDE FRAME COVER (6063-T6 ALUM.)	ALUMINUM
5	SIDE JAMB (SG ≥ 0.51)	LVL
6	SILL COVER (HOLLOW NOSE) (6063-T6 ALUM.)	ALUMINUM
10	HEAD JAMB (SG ≥ 0.51)	LVL
13	LOWER STILE (CLEAR PINE SG ≥ 0.42)	WOOD
14	RAIL (CLEAR PINE SG ≥ 0.42)	WOOD
17	SASH COVER (6063-T6 ALUM.)	ALUMINUM
19	GLAZING STOP (VERT.) (SG ≥ 0.42)	WOOD
21	SILL STOP (SG ≥ 0.42)	WOOD
22	SILL STOOL (SG ≥ 0.42)	WOOD
33	3/16" X 1-1/8" STAPLES	STEEL
34	1" WIRE BRADS	STEEL
35	18ga 1-1/4" BRAD NAIL	STEEL
37A	INSTANTGLAZE II GLAZING COMPOUND	POLYURETHANE
38	.031" x 625" FOAM TAPE (ADHESIVE RESEARCH)	FOAM TAPE
38A	GLAZING SHIM .250" x .065"	NEOPRENE
49	GLAZING SPACER DESICANT FILLED	-
84	#8 X 5/8" PFH SMS	STEEL
85	#8 X 1-1/2" PFH SMS	STEEL
86	STRAP ANCHOR 1.625" X 8.5" X 0.039" THK.	STEEL
90	CDHF HEAD & SIDE STOP SUPPORT (SG ≥ 0.42)	WOOD
93	CDHF SIDE STOP EXTRUSION	ALUMINUM
95	CDHF HEAD STOP EXTRUSION	ALUMINUM
97	SILL STOP (SG ≥ 0.42)	WOOD
98	THERMAL BLOCK (SG ≥ 0.42)	WOOD
99	SEALANT	SILICONE
100	SASH SEALANT	POLYISOBUTYLENE
150	1-1/2" INTERIOR COLONIAL MDL BAR	WOOD
151	1-1/2" EXTERIOR MDL BAR (6063 T-6)	ALUMINUM
152	1-1/2" MDL ADHESIVE TAPE (EXTERIOR TAPE)	POLYETHYLENE
153	1-1/2" MDL ADHESIVE TAPE (INTERIOR TAPE)	POLYETHYLENE
154	1-1/8" INTERIOR COLONIAL MDL BAR	WOOD
155	1-1/8" EXTERIOR MDL BAR (6063 T-6)	ALUMINUM
156	1-1/8" MDL ADHESIVE TAPE (EXTERIOR TAPE)	POLYETHYLENE
157	1-1/8" MDL ADHESIVE TAPE (INTERIOR TAPE)	POLYETHYLENE
158	7/8" INTERIOR COLONIAL MDL BAR	WOOD
159	7/8" EXTERIOR MDL BAR (6063 T-6)	ALUMINUM
160	7/8" MDL ADHESIVE TAPE (EXTERIOR TAPE)	POLYETHYLENE
161	7/8" MDL ADHESIVE TAPE (INTERIOR TAPE)	POLYETHYLENE
162	5/8" INTERIOR COLONIAL MDL BAR	WOOD
163	5/8" EXTERIOR MDL BAR (6063 T-6)	ALUMINUM
164	5/8" MDL ADHESIVE TAPE (EXTERIOR TAPE)	POLYETHYLENE
165	5/8" MDL ADHESIVE TAPE (INTERIOR TAPE)	POLYETHYLENE



OPTIONAL MUNTIN BAR ATTACHMENT TO GLASS



G1 GLAZING DETAIL

Documents Prepared By: **RW BUILDING CONSULTANTS, INC.**
P.O. Box 230 Valrico FL 33595
Phone No.: 813.659.9197
Florida Board of Professional Engineers
Certificate Of Authorization No. 9813
Wendell W. Higney, P.E. No. 54158

PRODUCT: DOUBLE HUNG TRANSOM
PART OR ASSEMBLY: BILL OF MATERIALS & GLAZING DETAILS

NO.	DATE	BY	REVISIONS
2	5/20/08	JK	Revise to 2007 FBC
1	12/21/07	WH	ADD GRADE OF WOOD

DATE: 05/22/08
SCALE: N.T.S.
DWG. BY: JK
CHK. BY: WWH
DRAWING NO.: FL-9669.6
SHEET 5 OF 5

© 2008 R.W. BUILDING CONSULTANTS INC.