

Installation Guide

Addendum for Eagle Talon[®] Monumental Single-Hung Windows with HarborMaster[®] Impact-Resistant System

Additional anchoring instructions to be used in conjunction with standard Eagle installation instructions, care and maintenance guides and certified test reports.



INSTALLER: Please leave this guide with the building owner to file for future reference.

Congratulations! You have just purchased one of the many fine Eagle[®] products. Proper assembly, installation and maintenance are essential if the benefits of your Eagle product are to be fully attained. Therefore, please read and follow this instruction guide completely. If your abilities do not match this procedure's requirements, contact an experienced contractor. You may direct any questions about this or other products to your local Eagle Window & Door dealer. For the dealer nearest you, visit our dealer locator at EagleWindow.com or call 1-800-324-5354. Thank you for choosing Eagle.

Important Safety, Assembly, and Installation Information

Every assembly and installation is different (windloads, structural support, etc.). Eagle strongly recommends consultation with an Eagle dealer or an experienced contractor, architect, or structural engineer prior to the assembly and installation of any Eagle product. Eagle has no responsibility in regard to the post-manufactured assembly and installation of Eagle products.

⚠ WARNING

Use caution when working at elevated heights and around unit openings. Follow manufacturer's instructions for safe use of ladders and/or scaffolding. Failure to do so may result in injury or death.

⚠ WARNING

Follow manufacturer's instructions for hand and power tools. Always wear safety glasses. Failure to do so may result in injury or product damage.

⚠ WARNING

Windows and doors can be heavy. Use safe lifting techniques and a reasonable number of people with enough strength to lift, carry and install window and door products to avoid injury and/or product damage.

⚠ WARNING

Unless specifically ordered, Eagle windows are not equipped with safety glass, and if broken, could fragment causing injury. Many laws and building codes require safety glass in locations adjacent to or near doors. Eagle windows are available with safety glass that may reduce the likelihood of injury when broken. Information on safety glass is available from your local Eagle dealer.

CAUTION

- Factory supplied Head Flashing and Installation Flanges **DO NOT** take the place of standard window and door flashing. Unit must be properly flashed and sealed with silicone for protection against water and air infiltration. Use non-reflective flashings.
- Do not apply any type of film to glass. Thermal stress conditions resulting in glass damage could occur.
- Use of movable insulating materials such as window coverings, shutters, and other shading devices may damage glass and/or vinyl. In addition, excessive condensation may result causing deterioration of windows and doors.

⚠ WARNING

Metal fasteners and other hardware components may corrode when exposed to preservative treated and fire-retardant treated lumber. Obtain and use the appropriate metal fasteners and hardware as called out by the installation guide to fasten unit to any rough opening made from pressure treated and fire-retardant treated lumber. Failure to use the appropriate materials for the installation may cause a failure resulting in injury, property or product damage.

⚠ WARNING

Do not carry or lift unit by extension jambs. Doing so may result in injury, product or property damage.

Tools and Supplies Needed

Tools

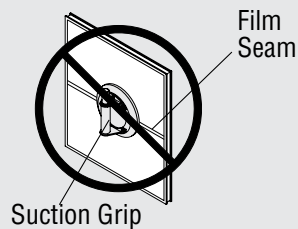
- Safety Glasses
- Thin Blade Putty Knife
- Drill/Driver
- #2 Phillips Bit

Supplies

- #8 x 2 3/4" PFH Wood Screws

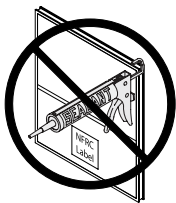
Glass

⚠ WARNING



Suction grips will not hold if placed over seam of film to lift or move unit. Unit will fall causing damage or injury.

CAUTION



Sealants will damage exterior coating on glass.

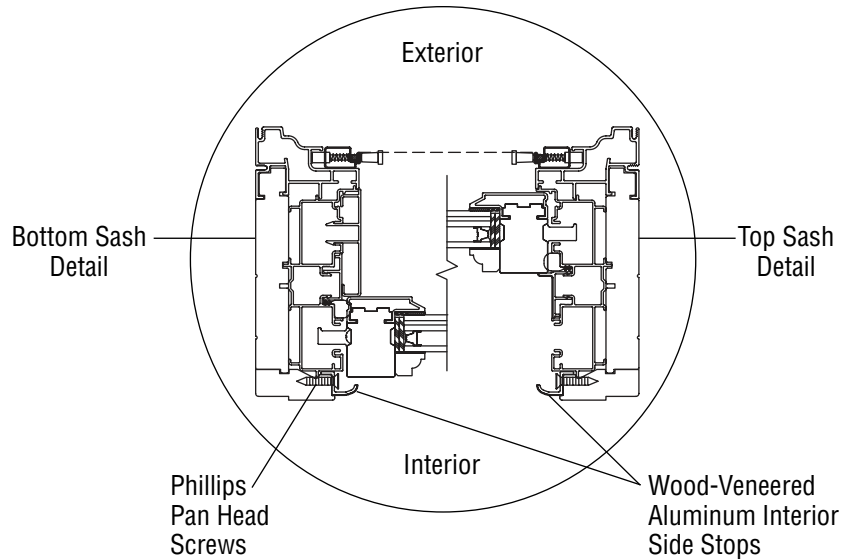
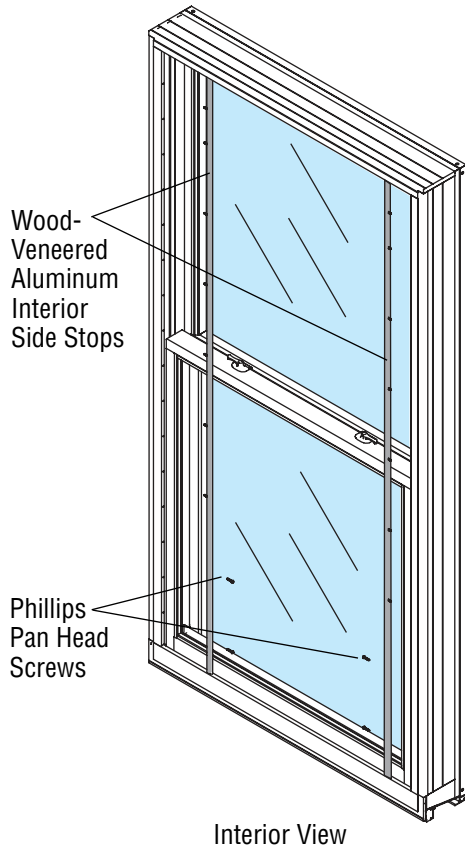
- Leave protective film in place until after construction is finished. Leave (NFRC) performance label in place until final inspection.

Additional Installation Steps

If windows are ordered without punched jamb liner inserts, begin with Step 1. If windows are ordered with punched jamb liner inserts, begin with Step 4.

Step 1 - Remove Wood-Veneered Aluminum Interior Side Stops

Carefully remove the wood-veneered, aluminum interior side stops by removing the Phillips pan head screws.

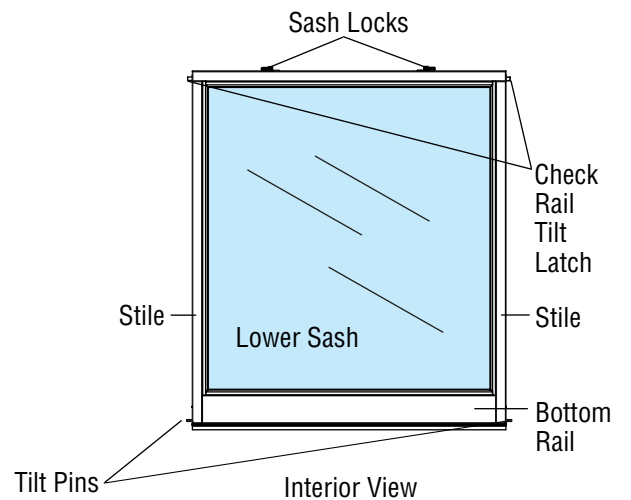


WARNING

Windows and doors can be heavy. Use safe lifting techniques and a reasonable number of people with enough strength to lift, carry and install window and door products to avoid injury and/or product damage.

Step 2 - Remove Lower Sash

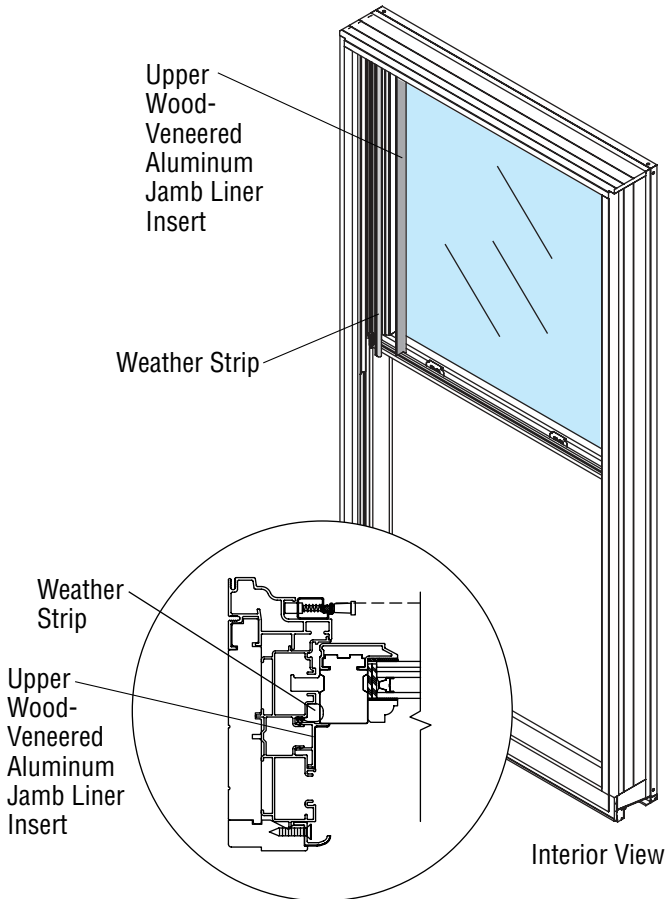
To remove the lower sash of a monumental single-hung window, unlock the sash locks and raise the sash about 3 inches. Use a rigid, thin blade putty knife to displace the check rail tilt latches. Slide the putty knife between the check rail of the sash and the jamb liner to disengage the check rail tilt latches, then pull inward. If the unit is wider than 36 inches or taller than 72 inches, it is recommended that two people are used to remove the sash. With the sash tilted inward, lift by the stile on one side near the bottom rail (where the tilt pin engages the balance system in the jamb liner). The tilt pin will disengage from the balance shoe. Then lift the other side on the stile near the bottom rail and angle the sash into the room. Set sash in a safe area to be reinserted later.



Additional Installation Steps - continued

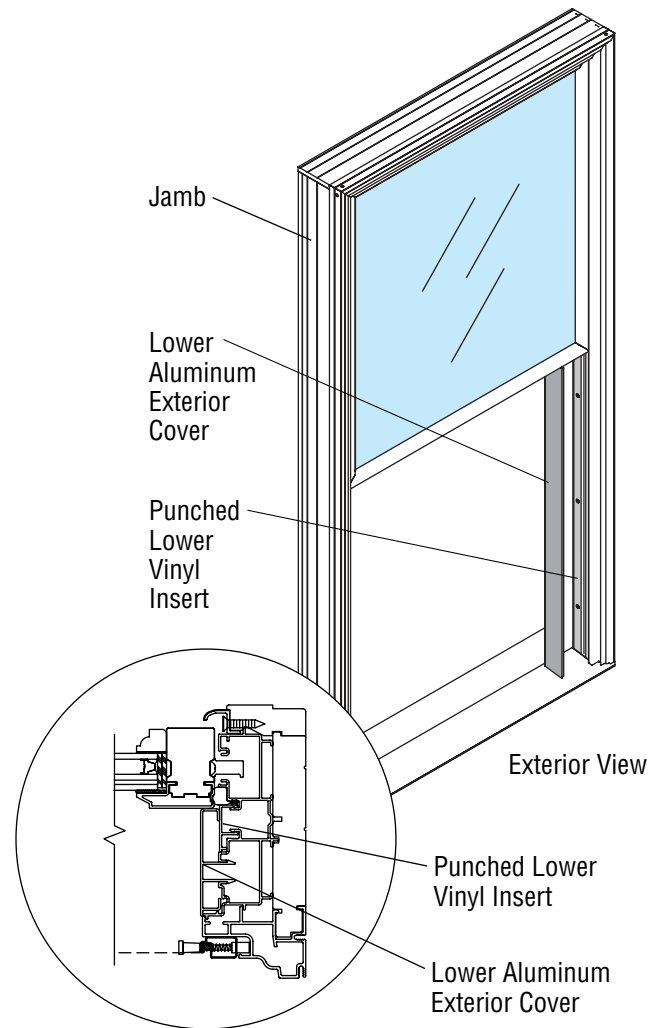
Step 3 - Remove Upper Wood-Veneered, Aluminum Jamb Liner Inserts

Carefully remove the upper wood-veneered, aluminum jamb liner inserts to expose the punch locations in each jamb liner. When removing, if the weather strip pops out, make sure it is reinserted correctly in the same groove as the insert.



Step 4 - Remove Lower Aluminum Exterior Cover

Remove the lower aluminum exterior cover. If ordered without punched inserts, carefully remove the lower vinyl inserts to expose the punch locations within the jamb liners. Use #8 x 2 3/4" PFH wood screws through the punched holes in the jamb liner into the jamb in accordance with the certified test report.



Step 5 - Reassemble The Window

Reverse the order of the insert and sash removal to reassemble the window. Once the sash has been replaced, check for proper operation and locking.